



# Breckenridge Lodge in Windsor, CO 80550

Please contact the builder for more information

Zachariah Satrang - 970.686.6861 - info@ZTSHomes.com

Destiny Masters - 970.686.6861 - info@ZTSHomes.com



## Located in Peakview Estates

Peakview Estates is located on the east side of Windsor, close to numerous recreational opportunities including the Pelican Lakes Golf Course and Eastman Park, and it is only 10 minutes from the new hospital and lifestyle mall at 25/34. Poudre Heights is close to the growing employment corridor along U.S. 34, which includes employers such as ConAgra, Poudre Valley Health Care System, State Farm Insurance, and the new Owens-Illinois bottling plant. Peakview Estates is loaded with open space, which is spread out around the entire subdivision. A paved walking trail runs along the North edge of the community. It also has a 15.5-acre park and future elementary school site. Phase two of the community will have an 8 acre lake that will provide a non-potable water system for community irrigation.

## General Specifications

- Price** \$298,900
- HOA Fees** \$257/yr
- Finished Area** 2,022 sqft.
- Total Area** 2,424 sqft.
- Bedrooms** 3
- Bathrooms** 3
- Garage** 3-car
- Basement** full
- Exterior** Stone/Wood
- Contemp.** 2-story
- Schools** Windsor RE-4

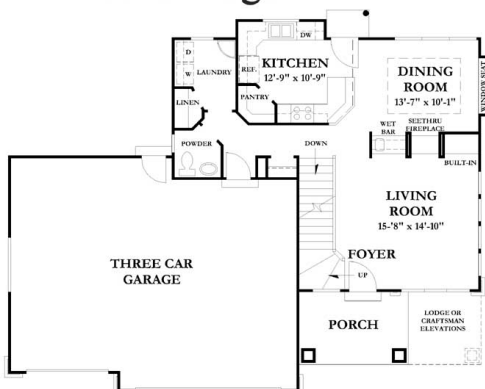
## School Information

- Windsor RE-4 School District (K-12)  
1020 West Main Street - (970) 686-8000  
[www.windsor.k12.co.us](http://www.windsor.k12.co.us)
- Tozer Ele. School (K-2)  
501 Oak St. - (970) 686-8400  
[www.windsor.k12.co.us/Tozer.htm](http://www.windsor.k12.co.us/Tozer.htm)
- Mountain View Ele. School (3-5)  
810 3rd St. - (970) 686-8300  
[www.windsor.k12.co.us/Mountain.htm](http://www.windsor.k12.co.us/Mountain.htm)
- Windsor Middle School (6-8)  
900 West Main St. - (970) 686-8200  
[www.windsor.k12.co.us/wms.htm](http://www.windsor.k12.co.us/wms.htm)
- Windsor High School (9-12)  
1100 Main St. - (970) 686-8100  
[www.windsor.k12.co.us/whs.htm](http://www.windsor.k12.co.us/whs.htm)

## Special Features of this Home

- \*Cathedral/vaulted ceilings
- \*Large dormer windows
- \*Central air conditioning
- \*Forced air heating
- \*Upgraded carpeting
- \*Stain/natural trim
- \*Raised panel alder cabinetry
- \*Gas fireplace
- \*Built-in entertainment center
- \*Iron spindled railing
- \*Jack & Jill bathroom
- \*Walk-in closet
- \*Separate dining room
- \*Corner pantry
- \*Stainless steel appliances
- \*Electric self-cleaning oven
- \*Electric range
- \*Microwave
- \*Dishwasher
- \*Ceramic tile backsplashes
- \*Eat-in kitchen
- \*Oversized 3-car garage
- \*Garage door opener
- \*Covered front porch
- \*17'x12' patio
- \*Level drive and lot
- \*Ceiling fan

**Breckenridge** (main level)



**Breckenridge** (upper level)

