



4756 Sorrel Lane Loveland, CO 80537

Please contact the builder for more information

Zachariah Satrang - 970.686.6861 - info@ZTSHomes.com

Destiny Masters - 970.686.6861 - info@ZTSHomes.com



Located in Thompson Crossing

Thompson Crossing is located in the center of the exploding commercial and retail development near I-25 and Highway 34. Our location on the banks of the Big Thompson River is only minutes from shopping at Centerra, entertainment at the Budweiser Event Center and the emergency services of the Medical Center of the Rockies. Enjoy a walk through 50 acres of open space along the river with ducks, gees, deer and panoramic views of the Rocky Mountains. The community has a recreational trail system, access to the Big Thompson River, natural open space and the Thompson Crossing Sculpture Walk. Fine restaurants, shopping, banking, golfing and employment are only a few blocks away.

General Specifications

- Price** \$389,900
- Finished Area** 3,259 sqft.
- Total Area** 3,259 sqft.
- Lot Size** 6,064 sqft.
- Bedrooms** 7
- Bathrooms** 4
- Garage** 2-car
- Basement** full, finished
- Exterior** Stone/wood
- Contemp.** Ranch/loft
- Year Built** 2009
- Schools** Thompson R2-J

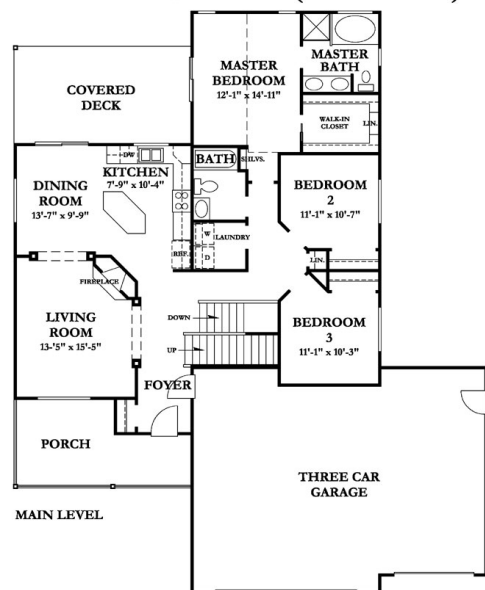
School Information

- Thompson R2-J School District (K-12)
800 S. Taft Ave. - (970) 613-5000
www.thompson.k12.co.us
- Garfield Ele. School (K-5)
720 Colorado Avenue - (970) 613-6000
<http://fc.thompson.k12.co.us/~ges/>
- Monroe Ele. School (K-5)
1500 Monroe Avenue - (970) 613-6500
<http://fc.thompson.k12.co.us/~mes/>
- Conrad Ball Middle School (6-8)
2660 Monroe Avenue - (970) 613-7300
<http://fc.thompson.k12.co.us/~cbms/>
- Walt Clark Middle School (6-8)
2605 Carlisle Drive - (970) 613-5400
<http://fc.thompson.k12.co.us/~wcms/>
- Mountain View High School (9-12)
3500 Mountain Lion Dr - (970) 613-7800
<http://mvhs.thompson.k12.co.us/>
- Thompson Valley High School (9-12)
1669 Eagle Drive - (970) 613-7900
<http://www.tvhseagles.org/moodle/>

Special Features of this Home

- *Cathedral/vaulted ceilings
- *Large dormer windows
- *Built-in entertainment center
- *Separate dining room
- *Raised panel alder cabinetry
- *Ceramic tile backsplashes
- *Stainless steel appliances
- *Covered front porch
- *Alder spindle railing
- *Stain/natural trim
- *Upgraded carpeting
- *Level drive and lot
- *Walk-in closet
- *Gas fireplace
- *Whole house humidifier
- *Central air conditioning
- *Forced air heating
- *Electric self-cleaning oven
- *Dishwasher
- *2 water heaters
- *17' x 12' patio
- *Garage door opener
- *Ceiling fan
- *Microwave
- *Electric range
- *Refrigerator
- *Full finished basement

Dillon (main level)



Dillon (upper level)

