

Breckenridge Lodge in Windsor, CO 80550



General Specifications

Price \$298,900

HOA Fees \$257/yr

Finished Area 2,022 sqft.

Total Area 2,424 sqft.

Bedrooms 3

Bathrooms 3

Garage 3-car

Basement full

Exterior Stone/Wood

Contemp. 2-story

Schools Windsor RE-4

Located in Peakview Estates

Peakview Estates is located on the east side of Windsor, close to numerous recreational opportunities including the Pelican Lakes Golf Course and Eastman Park, and it is only 10 minutes from the new hospital and lifestyle mall at 25/34. Poudre Heights is close to the growing employment corridor along U.S. 34, which includes employers such as ConAgra, Poudre Valley Health Care System, State Farm Insurance, and the new Owens-Illinois bottling plant. Peakview Estates is loaded with open space, which is spread out around the entire subdivision. A paved walking trail runs along the North edge of the community. It also has a 15.5-acre park and future elementary school site. Phase two of the community will have an 8 acre lake that will be provide a non-potable water system for community irrigation.



Please contact the builder for more information

Zachariah Satrang * 970.686.6861 * info@ZTSHomes.com

Destiny Masters * 970.686.6861 * info@ZTSHomes.com

Breckenridge Lodge in Windsor, CO 80550



Oversized 3-car garage
Garage door opener
Covered front porch
Level lot and drive



Finished basement



17x12 patio
Large backyard



Unfinished basement
402 sq. ft.
Forced air heating

Breckenridge Lodge in Windsor, CO 80550



Cathedral/vaulted ceilings
Gas fireplace
Built-in entertainment center
Central air conditioning



Ceramic tile backsplashes
Matching counter top
Electric self-cleaning oven
Microwave



Corner pantry
Stainless steel appliances
Eat-in kitchen
Dishwasher



Dining room
Built-in cherry shelf



Walk-in master closet
Ceiling fan
Upgraded carpeting



Nursery or 2nd bedroom
Jack & Jill bathroom



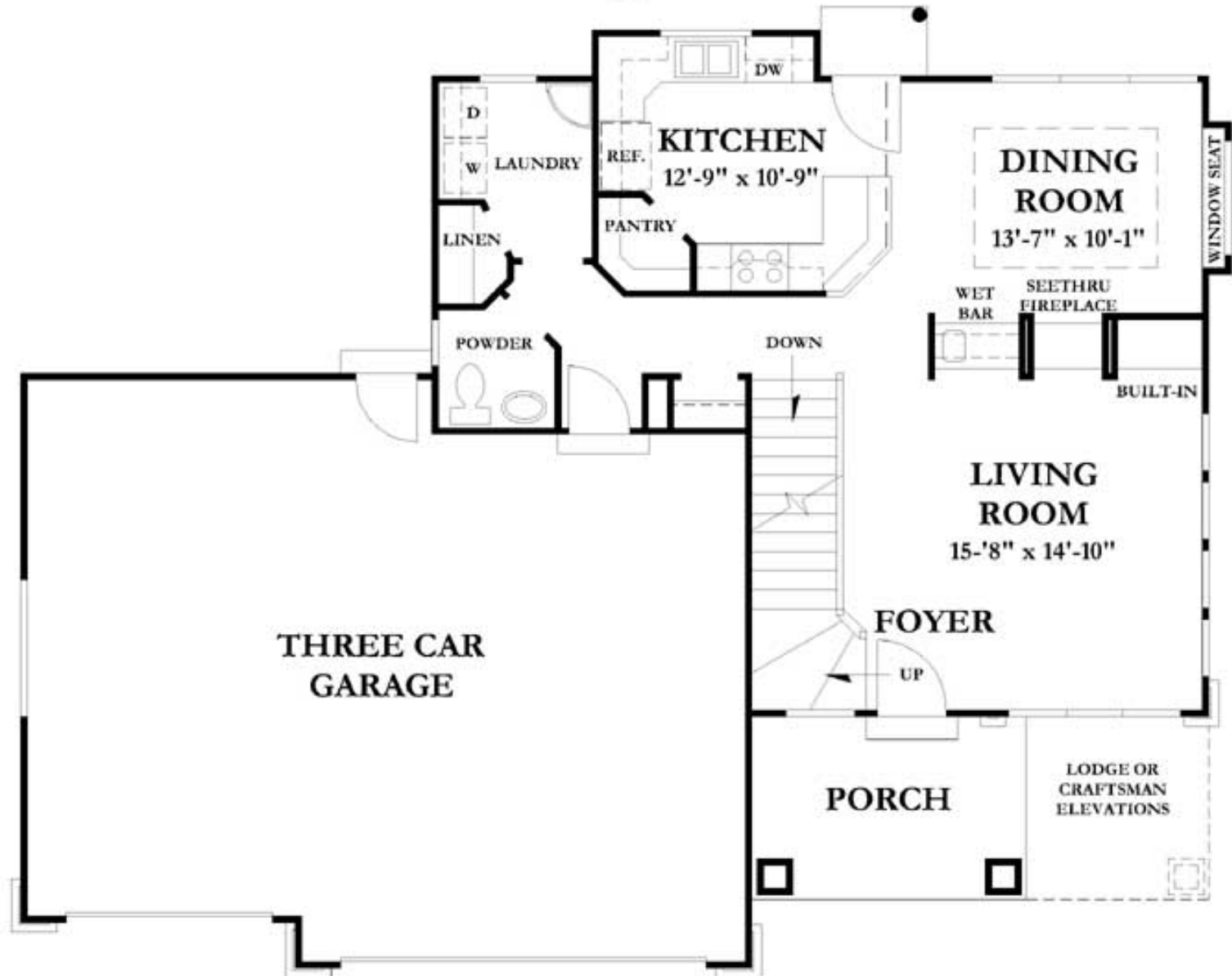
Iron spindled railing
Ceiling fan



Office or 3rd bedroom
Stain/natural trim

Please contact the builder for more information
Zachariah Satrang * 970.686.6861 * info@ZTSHomes.com
Destiny Masters * 970.686.6861 * info@ZTSHomes.com

Breckenridge (main level)

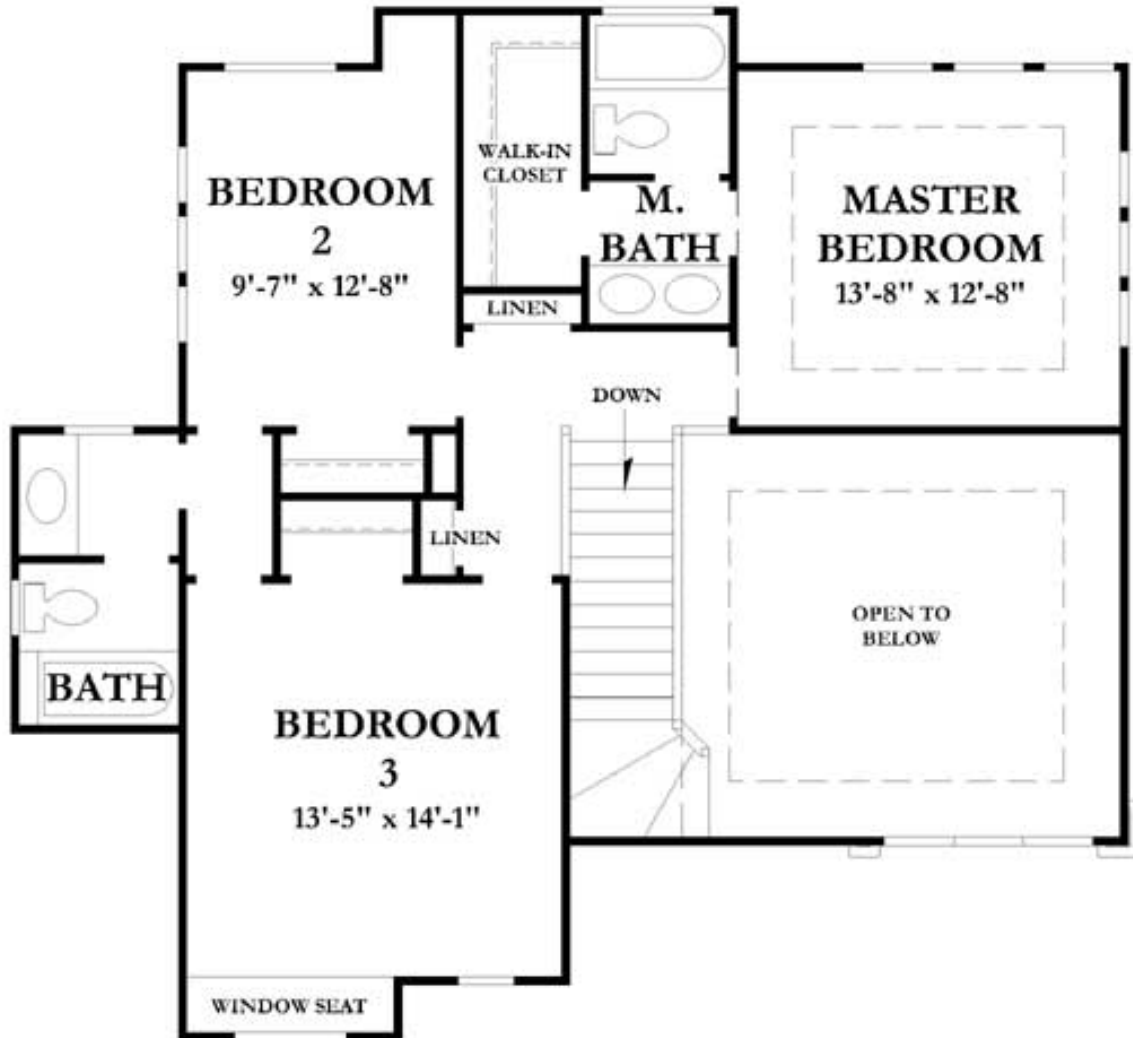


Please contact the builder for more information

Zachariah Satrang * 970.686.6861 * info@ZTSHomes.com

Destiny Masters * 970.686.6861 * info@ZTSHomes.com

Breckenridge (upper level)



Please contact the builder for more information

Zachariah Satrang * 970.686.6861 * info@ZTSHomes.com

Destiny Masters * 970.686.6861 * info@ZTSHomes.com